



GATE

Gifted and Talented Education
MICHIGAN STATE UNIVERSITY

2024-2025
PROGRAM GUIDE



APPLY ONLINE AT

gifted.msu.edu

IN MEMORIAM
Dorothy Lawshe

Dorothy Lawshe spent nearly 50 years in education, including 25 nurturing the minds of academically gifted young people. She recognized the need to support these students in their pre-collegiate years so that they might develop into actively engaged adults. The educational programs she developed as the founding director of Michigan State University's Office of Gifted and Talented Education have served thousands of youths and stand as a model for other communities to emulate.



Dorothy passed away in May 2019 and was the posthumous recipient of the Michigan Association for Gifted Children's inaugural Lifetime Achievement Award in October 2019. Former GATE director Jenny McCampbell accepted the award on behalf of Dorothy's family.

Dorothy received MSU's Crystal Apple Education award in 1998. She established the Cooperative Highly Accelerated Mathematics Program (CHAMP) and Math, Science, and Technology (MST@MSU) Program, both of which are still in existence.

To read more about Dorothy and her legacy, visit gifted.msu.edu.

Table of Contents

About Gifted and Talented Education at Michigan State University	1
About Academic Year Programs	2
About Summer Programs	3
Getting Started	4
Application Process	4
Testing Requirements	5
CogAT: Cognitive Abilities Test	5
Academic Year Programs	8
Academic Year Program Details	9
Costs and Payment	10
Cooperative Highly Accelerated Mathematics Program (CHAMP – Mathematics)	12
Intensive Studies in Humanities, Arts, Language, and Literature (ISHALL – English)	14
Michigan's Accelerated NihonGo for Americans (M.A.N.G.A. – Japanese)	16
Amo Linguam Latinam (ALL – Latin)	18
Summer Programs	20
Summer Program Details	21
Summer Costs and Payment	21
Gifted University for Precocious and Passionate Youth (GUPPY)	24
Intensive Studies for Gifted and Talented (IS4GT)	26
Math, Science, and Technology (MST@MSU)	28
Math, Science, Technology, and Leadership (MSTL)	30

Dear Families and Students,

In 2023, we returned to in-person classes for academic and summer programming. It felt great to have the students back on campus experiencing exciting learning opportunities. GATE summer students experienced classes with WILX's First Alert Meteorologist, Justin Bradford, learned podcasting at the IMPACT 89FM radio studio, and conducted experiments with television station WKAR's Curious Crew!

The amazing summer choices for GATE students include an intensive study in Pre-Med Education, which provides hands-on learning and direct access to laboratories and curriculum that MSU students and professors use for their college courses. Check out the many possibilities offered for gifted students in Grades 3-11 each year. We will be hosting a summer residential opportunity the week of July 15, 2024, for MST (Math, Science, and Technology), MSTL (Math, Science, Technology, and Leadership), and IS4GT (Intensive Studies for Gifted and Talented) students.

We will continue to offer in-person opportunities and our full two-year virtual academic year programs in ISHALL (Intensive Studies in Humanities, Arts, Language, and Literature) and CHAMP (Cooperative Highly Accelerated Mathematics Program). Students from Michigan and across the country have been attending live synchronous classes for math and English with the opportunity to collaborate with other gifted students near and far.

Please continue to refer to the GATE website for the most up-to-date information on dates, deadlines, and programs. For 2024 summer and academic year programs, the application deadline is May 10, 2024, or until programs fill. If academic year programs still have availability beyond that, an extended deadline will be offered for those specific openings. As always, we encourage everyone to apply early to ensure you have all materials submitted by the deadline. Summer programs have rolling admissions, so complete your application early!

This year we launched our GATE Gives Back program to begin raising funds to support more gifted students in Michigan. These efforts provide need-based scholarships for qualified gifted students in the U.S. For more information on how to donate, please visit givingto.msu.edu/crowdpower/gate. We thank you in advance for your support of gifted students and GATE programming.

GATE SUMMER AND ACADEMIC YEAR PROGRAMS **Virtual Information Meeting**

Sunday, April 7, 2024 | 1-2:30 pm

R.S.V.P. at gifted.msu.edu/GATEInfo2024



About Gifted and Talented Education

AT MICHIGAN STATE UNIVERSITY

Gifted and Talented Education (GATE) is a division of University Outreach and Engagement at Michigan State University. GATE is dedicated to promoting differentiated educational programs for students in middle school and high school. The mission of the Gifted and Talented Education office is to provide educational experiences that allow gifted students to develop intellectually, cultivate social relationships, and expand their understanding of the world.

GATE GIVES BACK

Donating to GATE Gives Back allows us to award need-based scholarships to students who would otherwise not have the opportunity to attend GATE programs. Scholarship awards are available for testing fees, summer tuition, and academic year tuition on a first come, first served basis to qualifying U.S. citizens.

For more information and how to donate, please visit:

givingto.msu.edu/crowdpower/gate

About Academic Year Programs

Space is limited in academic year programs and the application process is competitive. Programs may fill before the application deadline.

Our academic year programs challenge gifted middle and high school students in math, literature, and language. These programs are designed to replace high school curricula, allowing students to complete four years of Michigan High School Content Expectations (HSCE) and Common Core National Standards in just two years of study. (Exception: M.A.N.G.A. is a three-year course.) Courses are taught by MSU instructors. Students are expected to stay with the program for the full program cycle.

After completion, most students (excluding CHAMP) are prepared to take advanced placement (AP) courses at their high school or take dual enrollment through MSU or another institution.

Students should receive high school credit for their GATE academic year program. Please contact your student's school to confirm how they grant credit for GATE academic year programs.

Academic year programs include:

Cooperative Highly Accelerated Mathematics Program (CHAMP – Mathematics)

Applications are open to students currently in Grades 6-9. CHAMP is offered in East Lansing and online. The CHAMP program begins with Algebra 1.

Intensive Studies in Humanities, Arts, Language, and Literature (ISHALL – English)

Applications are open to students currently in Grades 6-10. ISHALL is offered in East Lansing and online. The ISHALL program begins with Grade 9 English curriculum.

Michigan's Accelerated NihonGo for Americans (M.A.N.G.A. – Japanese)

Applications are open to students currently in Grades 6-9. M.A.N.G.A. is a hybrid class with live, synchronous online curriculum. M.A.N.G.A. begins with Year 1 Japanese curriculum. PLEASE NOTE: This is a 3-year program.

Amo Linguam Latinam (ALL – Latin)

Applications are open to students currently in Grades 6-10. ALL is a live, synchronous online course. ALL begins with Year 1 Latin.

About Summer Programs

Summer programs have rolling admissions and fill up quickly! Programs may fill before the application deadline. Apply early!

GATE summer programs offer students the chance to experience advanced coursework and the college campus environment alongside their high-achieving peers. Programs include a residential option (when permitted) for Grades 7 and above (age 12 and above), as well as a commuter option for all programs.

Summer programs include:

Gifted University for Precocious and Passionate Youth (GUPPY)

GUPPY offers a variety of exploratory educational presentations and hands-on experiences to students in Grades 3–6 in Michigan State University's laboratories and classrooms. There are several advanced topic tracks for students to choose from, each with its own combination of classes. Classes may include fine arts, career exploration, STEAM-based curriculum, and additional skill-based courses meant to introduce young students to a variety of experiences.

Intensive Studies for Gifted and Talented (IS4GT)

IS4GT is a one-week advanced residential or commuter program in a specific concentrated curriculum for students in Grades 6–11. Previous IS4GT tracks have included Pre-Med ED, writing, and computer programming. Students spend the week with experts in the discipline, rigorously exploring the course topic.

Math, Science, and Technology (MST@MSU)

MST@MSU is a one-week residential or commuter program for students in Grades 7–8. Students can choose from several advanced topic tracks. Each track has three classes, featuring a combination of math, science, and technology instruction. MST is offered in a wide range of subjects, which have previously included computer science, astrophysics, kinesiology, engineering, and more.

Math, Science, Technology, and Leadership (MSTL)

MSTL is a one-week residential or commuter program for students in Grades 9–10. This program has previously included advanced topics such as molecular biology, advanced mathematics, and physics. Students will choose tracks that include two courses in either math, science, or technology as well as a leadership workshop. The leadership workshop is designed to help them navigate their college journey.

Getting Started

GUPPY applicants require:

- Standardized, above-grade level testing (see Testing Minimum charts on page 6)
- **\$75 nonrefundable application fee**
- Teacher recommendation

All other programs require:

- Standardized, above-grade level testing (see Testing Minimum charts on page 6)
- Teacher recommendation
- Your most recent grade report
- Diagnostic assessment (CHAMP and ISHALL - included in the application)
- **\$75 nonrefundable application fee**

Students who are not accepted into a program must reapply and pay an additional application fee the next time they apply to a GATE program. Students may not defer their acceptance.

Application Process

Visit gateway.gifted.msu.edu. There you will complete (or update, if you're a returning applicant) a student profile. Once that's done, you can begin your application!

NOTE: Please visit gifted.msu.edu/FAQs for application deadlines.

1. Complete your testing early! Testing information can be found at gifted.msu.edu. Each program page has an "Eligibility" page with minimum accepted tests and scores for applying. If you have an above-level test that is not listed, please email gifted@msu.edu to see if we will consider it.
2. Upload your testing and a recent report card to your application. Clear photographs or scanned images of official test scores and report cards are accepted.
3. You will be asked for your teacher's email address within your application. Once submitted, your teacher will receive a link to complete the recommendation form. External letters or recommendations are not accepted.
4. **Pay your \$75 nonrefundable application fee at gifted.msu.edu/payment.**
5. If you are applying for a need-based scholarship, you will do so in the application. You must upload the previous year's signed tax return to be considered for aid. Students are limited to receiving one award per lifetime.

*GUPPY applications no longer require a grade report.

Completed summer applications are reviewed on a rolling basis beginning in March until programs are filled.

Complete academic year applications are reviewed after the first regular deadline, and families will be notified of decisions until programs are filled. If programs still have availability, complete applications will be reviewed after the extended deadline. Once your application has been completed and reviewed, you will receive a decision letter and any other materials via email.

Testing Requirements

All programs require **above-grade-level testing** such as SAT, ACT, CogAT, or NNAT. For more information, visit gifted.msu.edu.

The following charts show minimum test scores required to apply for GATE programs for Grades 3 and up.

Only one qualifying score per test is required to meet minimum application requirements. For example, a CHAMP applicant needs an ACT score of at least 20 in math or a 21 composite to apply.

- Testing alone does not guarantee your student's acceptance.
- A diagnostic test is required for CHAMP and ISHALL applications.
- A full IQ score report administered by a licensed professional is acceptable for all programs, in place of the tests listed above. For IQ testing information, visit gifted.msu.edu.
- Score requirements are a minimum benchmark to apply for academic year programs.
- The application review process is holistic and will take into consideration all aspects of your application.

CogAT

Cognitive Abilities Test

(Administered by MSU GATE)

To **REGISTER** and for **DATES**** go to
gifted.msu.edu/testing/cogat-testing

Cost: \$89 per person

**More dates will be added as needed.

Test Scores Accepted for the GUPPY Program (Current 3rd-6th graders)

Program	PSAT 8/9 Math	PSAT 8/9 Reading	NNAT	IOWA	NWEA	MSTEP	CogAT
GUPPY 3-4	410	410	90th percentile	90th percentile	95th percentile	Level 4	90th percentile
GUPPY 5-6	410	410	90th percentile	90th percentile	95th percentile	Level 4	90th percentile

Note: A full IQ score report is acceptable for all programs, in place of the tests listed above. For IQ testing information, visit gifted.msu.edu. If your scores come close to meeting the stated minimums, we encourage you to apply.

Minimum Test Scores Required for GATE Academic Year Programs** (Current 6th graders and up)

Program	ACT Math	ACT English	ACT Reading	ACT Composite	SAT Math	SAT Evidence-Based Reading and Writing	SAT Total	CogAT**
CHAMP	20	++	++	21	530	++	1000	90th percentile (Quantitative)
ISHALL	☒	20	20	☒	☒	500	☒	90th percentile (Verbal or Non-Verbal)
ALL	☒	19	19	☒	☒	480	1000	90th percentile (Composite)
M.A.N.G.A.	☒	19	19	☒	☒	480	1000	90th percentile (Composite)

*** GATE will accept ACT and SAT subject test scores.

++No minimum score required, but student must exhibit a proficiency for reading and writing comprehension.

** CogAT scores must be in the 90th percentile in the indicated subtest. Retesting required after 3 years.

Minimum Test Scores Required for GATE Summer Programs (Current 7th graders and up)

Program	Grades	ACT Math	ACT English	ACT Reading	ACT Composite	SAT Math	SAT Evidence-Based Reading and Writing	SAT Total	CogAT**
MST@MSU	7-8	18	18	18	18	480	480	☒	90th percentile
MSTL	9-10	19	19	19	19	500	500	1000	90th percentile
IS4GT	6-11 varies	18	18	18	18	480	480	☒	90th percentile

** Retesting required after 3 years.

IQ TESTING

For application to GATE programs, an IQ test is acceptable in place of an ACT, SAT, or CogAT tests. To submit an IQ test result for a GATE application to be reviewed, it must include the evaluation in its entirety.

Pat LaPat

Clinical Psychologist

36516 Green Spring
Farmington Hills, MI 48311
Call 248-661-0195 for details

or

2190 N. Woodward
Bloomfield Hills, MI 48301
Call 248-661-0195 for details

Bright Pine

Dr. Katherine Lewitzke, PsyD, LP

Licensed Psychologist and Clinic Director
Call 248-455-6619 for details

MSU Psychological Clinic

316 Physics Rd., Rm 151
East Lansing, MI 48824
Call 517-355-9564 for details

University of Michigan

The University Center for the Child and Family

Call 734-764-9466 for details

Wayne State University

Psychology Clinic

60 Farnsworth St
Detroit, MI 48202
Call 313-577-2840 for details

The cost varies based on the services requested and rendered. Please call provider to inquire about cost.

GATE does not recommend, guarantee, or take any responsibility or liability for the list of organizations above.

For additional information on IQ testing visit
gifted.msu.edu/testing/iq-testing



Academic Year Programs

Our academic year programs challenge gifted middle and high school students in math, literature, and foreign language. Space is limited in academic year programs, and the application process is competitive. Programs may fill up before the application deadlines.

Apply early!

Academic Year Application Guideline

If you are **currently** in the following grades during application time...

You can apply for the following Academic Year Programs:

Grades 6-9

CHAMP or M.A.N.G.A.

Grades 6-10

ISHALL or ALL

Note: Students begin these programs in the fall of their 7th, 8th, 9th, or 10th grade year. For example, to begin the program in the fall of seventh grade, students must apply in the spring of their sixth grade year. Although students may be younger than the grades stated, because of the nature of the acceleration and the high school level content, no exceptions for younger students will be granted.

For more information on responsibilities, academic integrity, lessons and class structure, and student evaluations, visit gifted.msu.edu/programs/academic-year-programs.

Academic Year Program Details

What to Expect from Your GATE Program

GATE programs are designed to provide educational experiences that allow gifted students to develop intellectually, cultivate social relationships, and expand their understanding of the world.

Attendance, Participation, and Academic Probation

Course attendance is mandatory.

Students are allowed two absences per semester (two for Fall, two for Spring) and must make up any missed classwork by the next class session. Students who miss more than two class sessions will not receive a passing grade for the course and will be removed upon the third absence.

For the most up-to-date policy details, please visit

gifted.msu.edu/programs/academic-year-programs/responsibilities-of-participants.

Instructional Plan

Students attend one to two classes per week for a total of 2–2.5 hours. The schedule depends on the delivery and location of each course section.

Traditional high school curriculum is taught at an accelerated pace, requiring the student to learn to be motivated and self-guided outside of the classroom to complete substantial homework and be a mature, independent learner.

There are regularly scheduled academic year program labs outside of school hours intended to strengthen a student's understanding of program materials and concepts and to seek additional help as needed from program tutors. Study labs are highly recommended but optional unless the instructor has required them for your student. This requirement will be communicated to families in advance.

Students will be given an MSU account for the online course website to access academic year program coursework/homework, which should be checked daily. Parents must allow students to communicate directly with the academic year program instructor.

Parent-teacher conferences are scheduled mid-semester to give parents an opportunity to communicate in person with the instructor about their student's progress. Progress reports are made available to each student's family midway through the Fall and Spring semesters. Grade reports are distributed to families and the student's school of record at the end of each semester.

Costs and Payment

These fees apply to:

CHAMP (all locations), **ISHALL** (all locations), **M.A.N.G.A.**, and **ALL**

Application fees

A nonrefundable \$75 application fee is required for each program.

Tuition

Tuition is \$1,690 per year

- \$845 is due within 7 days of program billing to confirm attendance.
- \$845 is due within 14 days of program billing. Please refer to acceptance letter for due dates.

Failure to pay tuition by the due dates will result in immediate withdrawal from the program. No refunds will be given.

Note: Tuition payments are nonrefundable. Students accepted within 14 days of the program start will be subject to an abbreviated payment deadline.

Need-Based Scholarships

Need-based scholarships may be available to qualifying students with a financial need. Fill out the scholarship page of the application when you apply. Parents should also contact their student's school to learn if any financial support is provided by the school. Scholarship recipients qualify to have any textbooks and field trips covered by the GATE office.

Because scholarship funding is limited, families are granted one award per lifetime. Scholarship opportunities are limited to U.S. citizens whose permanent residence is in Michigan.

School Tuition and Credit Granting Process

Many school districts in and around GATE program areas contribute all or part of a student's tuition. Upon acceptance, you will indicate in your enrollment paperwork whether your school contributes tuition. Families are responsible for all tuition and fees by the due dates listed in their acceptance materials. Tuition due dates are indicated in the student's decision letter. If payment is not received by posted due dates, then the student will be withdrawn from the program. All paid tuition or fees are nonrefundable.

Schools are invoiced ONCE a year beginning in October. If a student's school contributes tuition costs or fees, parents will be refunded that amount AFTER the school payment is received.

GATE MSU Academic Programs are conducted as an opportunity for students to gain high school level credit, but they are not considered an honors-level course. CHAMP and ISHALL classes are designed to align with Michigan HSCE requirements as well as Common Core. Parents are responsible to communicate with their child's school before applying to any academic program to address the question of issuing credit and placement of their student in their class curriculum and/or schedule. GATE does not guarantee any credit acceptance with any school or district.

NOTE: If your student leaves the program for any reason, the student is responsible for reimbursing the school for the cost of the tuition that they paid on the student's behalf.

How to Pay

Payments can be made online at gifted.msu.edu/payment.

Other Costs

Parents are responsible for providing transportation, as well as textbooks, classroom supplies, and a TI-84+ calculator for CHAMP students. Some programs may organize optional field trips with attendance costs to be paid by the family. For any virtual programs, students need a computer or laptop that is less than five years old and access to the internet with a recommended bandwidth of at least 300 kbps. If you have financial issues, see our policies at gifted.msu.edu/paying/need-based-scholarships.

Cancellation Policy

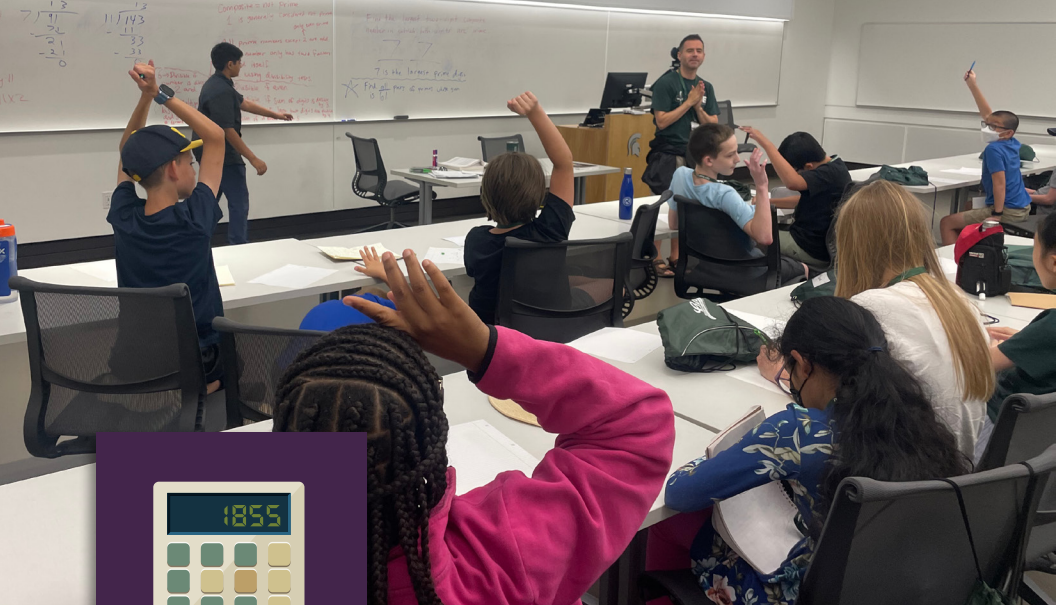
All classes are subject to a minimum enrollment and may be canceled at the discretion of the GATE office. Your application fee and any paid tuition will be refunded.

Refunds

No fees or tuition will be refunded unless the GATE office cancels the program.

Withdrawals

All requests for withdrawals must be submitted in writing to the Gifted and Talented Education office via email at gifted@msu.edu. No fees or tuition will be refunded.



Cooperative Highly Accelerated Mathematics Program

(CHAMP – Mathematics)

FALL 2024 – SPRING 2026

CHAMP, in partnership with the Department of Mathematics and University Outreach and Engagement at Michigan State University, provides classroom instruction for qualified, mathematically gifted students applying in Grades 6-9.

Important Dates for CHAMP Program

Application deadline: May 10, 2024

Extended deadline: July 12, 2024

Information meeting: April 7, 2024 | 1-2:30 pm



FOR MORE INFORMATION, VISIT:

gifted.msu.edu/champ

For information including extended course descriptions, payment options, policy changes, and testing information, please visit gifted.msu.edu. Programs subject to change without notice | Email: gifted@msu.edu

**Class days and times are available on the GATE website, gifted.msu.edu.
Please refer to the GATE website for the most up-to-date class information.**

Students attend one to two classes per week for a total of 2–2.5 hours. The schedule depends on the delivery and location of each course section. Students are expected to attend regularly scheduled academic year program labs outside of class.

CHAMP is designed so that participating students will complete in two years the math content assigned in Michigan High School Content Expectations (HSCE) for all four years of high school and meet the Common Core National Standards. In their first year of CHAMP, students study Algebra 1 and Algebra 2. In the second year, CHAMP students study geometry and a standard pre-calculus course (trigonometry, analytic geometry, college algebra, and a brief introduction to calculus concepts).

Students must begin CHAMP with the study of Algebra 1. Bypassing one or more CHAMP courses is not permitted. Most students completing CHAMP will be prepared to enroll in an honors high school calculus course, an advanced placement (AP) high school calculus course, or a college calculus course.

CHAMP** Schedule

Schedule:	Course:
Semester 1 (Fall, Year 1)	Algebra 1
Semester 2 (Spring, Year 1)	Algebra 2
Semester 3 (Fall, Year 2)	Geometry
Semester 4 (Spring, Year 2)	Pre-Calculus

**See the Academic Year Program details including instructional plans, responsibilities, expectations, and structure at the beginning of this section (pp. 9-11).



Intensive Studies in Humanities, Arts, Language, and Literature

(ISHALL – English)

FALL 2024 – SPRING 2026

ISHALL, in partnership with the Department of English, the Department of Writing, Rhetoric, and American Cultures, and University Outreach and Engagement at Michigan State University, provides classroom instruction for qualified, gifted language art students applying in Grades 6-10.

Important Dates for ISHALL Program

Application deadline: May 10, 2024

Extended deadline: July 12, 2024

Information meeting: April 7, 2024 | 1-2:30 pm



FOR MORE INFORMATION, VISIT:

gifted.msu.edu/ishall

For information including extended course descriptions, payment options, policy changes, and testing information, please visit gifted.msu.edu. Programs subject to change without notice | Email: gifted@msu.edu

**Class days and times are available on the GATE website, gifted.msu.edu.
Please refer to the GATE website for the most up-to-date class information.**

Students attend one to two classes per week for a total of 2–2.5 hours. The schedule depends on the delivery and location of each course section. Students are expected to attend regularly scheduled academic year program labs outside of class.

Because students are studying typical high school literature content, ISHALL curriculum may contain mature content that is not appropriate for all students. Parents may ask the GATE office to review a past curriculum example and then determine if their student is ready for the ISHALL curriculum.

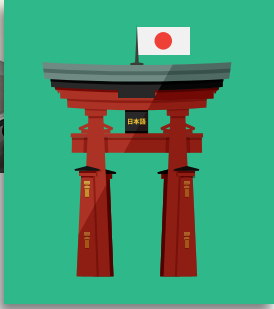
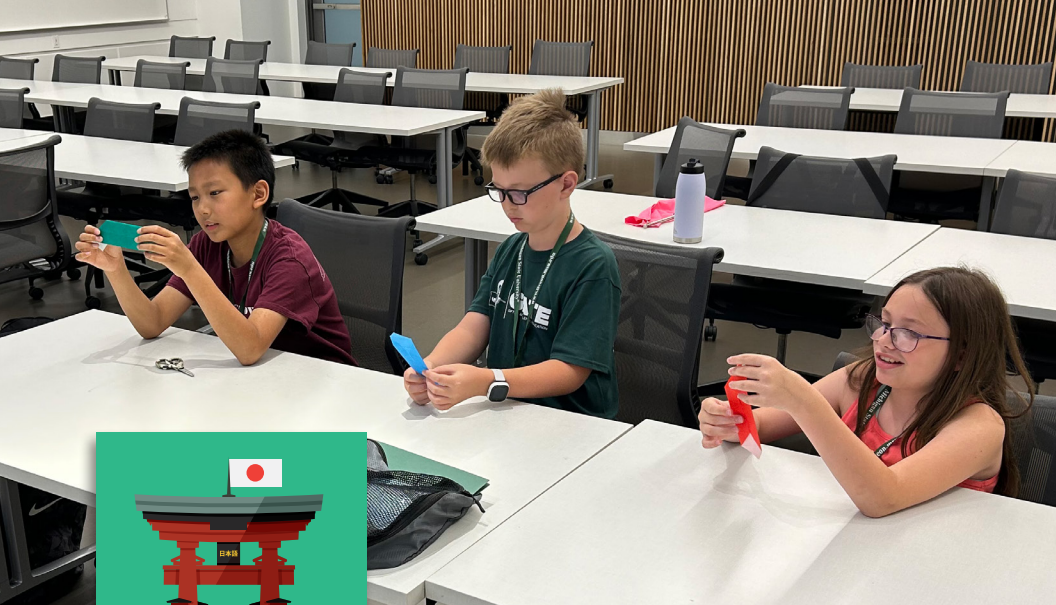
ISHALL is designed so that participating students will complete in two years the English content assigned in Michigan High School Content Expectations (HSCE) for all four years of high school as well as meet the Common Core National Standards.

Students must begin ISHALL with the Grade 9 English curriculum. Bypassing one or more courses is not permitted. Most students completing ISHALL will be prepared to enroll in an honors high school English course, an advanced placement (AP) high school English course, or a college English or writing course.

ISHALL** Schedule

Schedule:	Course:
Semester 1 (Fall, Year 1)	Grade 9 English curriculum
Semester 2 (Spring, Year 1)	Grade 10 English curriculum
Semester 3 (Fall, Year 2)	Grade 11 English curriculum
Semester 4 (Spring, Year 2)	Grade 12 English curriculum

**See the Academic Year Program details including instructional plans, responsibilities, expectations, and structure at the beginning of this section (pp. 9-11).



Michigan's Accelerated NihonGo for Americans

(M.A.N.G.A. – Japanese)

FALL 2024 – SPRING 2027

M.A.N.G.A., in partnership with the Office of University Outreach and Engagement at Michigan State University, provides classroom instruction for qualified, gifted students applying in Grades 6-9.

Important Dates for M.A.N.G.A. Program

Application deadline: May 10, 2024

Extended deadline: July 12, 2024

Information meeting: April 7, 2024 | 1-2:30 pm



FOR MORE INFORMATION, VISIT:

gifted.msu.edu/manga

For information including extended course descriptions, payment options, policy changes, and testing information, please visit gifted.msu.edu. Programs subject to change without notice | Email: gifted@msu.edu

**Class days and times are available on the GATE website, gifted.msu.edu.
Please refer to the GATE website for the most up-to-date class information.**

The GATE Japanese Program offers a technology-enhanced format. Students will be required to attend live, synchronous, virtual instruction via Zoom. Throughout the year, students will be able to seek additional assistance via regularly scheduled virtual labs.

M.A.N.G.A. is designed so that the participating students can complete in three years the Japanese language content assigned in Michigan High School Content Expectations (HSCE) for all four years of high school. Every semester of the GATE Japanese program corresponds to one year of high school Japanese.

Students must begin M.A.N.G.A. with the Grade 9 Japanese curriculum. Bypassing one or more courses is not permitted. Students completing M.A.N.G.A. will be prepared to take the Japanese Language and Culture advanced placement (AP) exam, the JLPT (Japanese Language Proficiency Test), or a college Japanese course. Students must register for the AP exam via their home school. GATE does not facilitate any external test enrollment.

M.A.N.G.A.** Schedule

Schedule:	Course:
Semester 1 (Fall, Year 1)	Japanese 1
Semester 2 (Spring, Year 1)	Japanese 2
Semester 3 (Fall, Year 2)	Japanese 3
Semester 4 (Spring, Year 2)	Japanese 4
Semester 5 (Fall, Year 3)	AP Japanese
Semester 6 (Spring, Year 3)	AP Japanese

**See the Academic Year Program details including instructional plans, responsibilities, expectations, and structure at the beginning of this section (pp. 9-11).



Amo Linguam Latinam

(ALL – Latin)

ALL, in partnership with the Department of Writing, Rhetoric, and American Cultures, and University Outreach and Engagement at Michigan State University, provides classroom instruction for qualified world language students in Grades 7-11.

ALL is on hiatus for Fall 2024. Please check back in January 2025 for the ALL program starting Fall 2025.



FOR MORE INFORMATION, VISIT:

gifted.msu.edu/all



MSU Non-Discrimination Statement

MSU's Anti-Discrimination Policy prohibits acts of discrimination and harassment against any university community member(s) by inappropriately limiting employment opportunities, access to university residential facilities, or participating in educational, athletic, social, cultural, or other university activities on the basis of age, color, gender, gender identity, disability, height, marital status, national origin, political persuasion, race, religion, sexual orientation, veteran status, or weight. Complaints under this policy may be submitted to the Office of Institutional Equity for investigation.

MICHIGAN STATE
UNIVERSITY





Summer Programs

GATE summer programs offer students the chance to experience advanced noncredit coursework and the college campus environment alongside their high-achieving peers. Summer program applications are reviewed on a rolling basis and classes fill up quickly. **Apply early!**

Summer Programs Application Guideline

See gifted.msu.edu for grade-level requirements.

If you are currently in...	...you can apply for the following Summer Programs:
Grades 3 or 4	GUPPY 3-4
Grade 5	GUPPY 5-6
Grade 6	GUPPY 5-6, IS4GT: Intensive Studies
Grade 7-9/10	MST@MSU, IS4GT: Intensive Studies
Grade 9-10	MSTL, IS4GT: Intensive Studies

Summer Program Details

Costs and Payment

These fees apply to:

GUPPY, IS4GT, MST, and MSTL

Application Fee

All programs require a \$75 nonrefundable application fee.

Please note that this fee must be paid **BEFORE** any information is shared or reviewed on your application.

Tuition

Tuition amounts and deadlines are detailed in students' acceptance letters. Standard payment structure: 50% due within 7 days of billing; remaining 50% due within 14 days of billing. **Students accepted within 14 days of the program start will be subject to an abbreviated payment deadline.**

.....

GUPPY

\$350 per session

All Day (during the week): **\$650** (includes lunches)

.....

IS4GT, MST@MSU, and MSTL

Commuter: **\$895** - includes lunches

Residential: **\$1,995**

Additional Fees

- A \$25 change fee will be assessed to any track changes after acceptance (where permitted).
- A \$25 late payment fee will be assessed to any payment posted after 11:59 pm EST on the payment due date.

How to Pay

Payments can be made online at gifted.msu.edu/payment.

Cancellation Policy

All programs, or classes within a program, may be subject to a minimum enrollment and may be canceled at the discretion of the GATE office. Additionally, the residential portion of the programs may be canceled if there are not enough residential students enrolled. Any applicable fees and/or tuition will be refunded.

Refunds and Drops

The application fee of \$75 is nonrefundable.

All requests for withdrawals for summer programs must be submitted in writing to the Gifted and Talented Education office via email at gifted@msu.edu. No fees or tuition will be refunded.

A student may only leave the program in case of emergency. In such a case, the student should take all personal belongings with them as they will be considered withdrawn from the program. No refunds will be given.

Commuting and Lodging

Local families commute daily by dropping off and picking up their student each day from campus. For out-of-area families, a stay in East Lansing offers an opportunity to access gifted programming on the beautiful MSU campus. Families may stay in the area and connect with other gifted students and make contacts to stay in touch. GATE will provide accepted families a list of local hotel accommodations, many of which will be available at a discounted rate for GATE families.

FAQs

For Summer program FAQs, visit gifted.msu.edu/about/faqs.



Gate

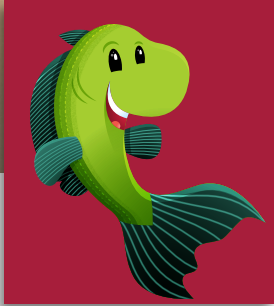
GIFTED AND TALENTED EDUCATION

MICHIGAN STATE UNIVERSITY
gifted.msu.edu

GATE Information Meeting

April 7, 2024 • 1-2:30 pm

R.S.V.P. at
gifted.msu.edu/rsvpGATEInfo2024



Gifted University for Precocious and Passionate Youth (GUPPY)

GUPPY is a week or weekend program offering students in Grades 3-6 a variety of accelerated exploratory educational presentations and hands-on experiences in Michigan State University's laboratories and classrooms.

Important Dates for GUPPY Program

All M-F GUPPY programs have an AM, PM, or all-day option.
All weekend programs are all-day only.

M-F Programs

- June 17-21, 2024
- June 24-28, 2024
- July 8-12, 2024
- July 15-19, 2024 (AM session only)

Weekend Programs

- June 21-23, 2024
- June 28-30, 2024



Application deadline: May 10, 2024

FOR MORE INFORMATION, VISIT:

gifted.msu.edu/guppy

GUPPY is designed for young gifted and talented students to attend classes taught by MSU faculty and subject-matter experts at Michigan State University. This GATE program offers young gifted students a variety of accelerated exploratory educational presentations and hands-on experiences in MSU’s laboratories and classrooms.

GUPPY tracks are intended to give young students an introduction to a variety of subjects to help them determine future areas of interest. As such, GUPPY tracks will offer a plethora of options, and tracks may not always consist of a dedicated subject area. Many class options are STEAM based, and other courses offer unique educational opportunities that most gifted students in this demographic would not normally have the chance to participate in at a premier university campus. Applicants may mix and match AM and PM tracks to get a customized learning experience.

GUPPY applicants require a qualifying above-grade-level test, teacher recommendation, and the \$75 nonrefundable application fee to complete their application.

GUPPY 3-4 Track Options

Space is limited, and each track will be filled on a first-come first-served basis.

For full descriptions, see gifted.msu.edu/guppy.

Please see sample schedule below. Not all classes listed will be available; this is meant to be a sample of class variety and times. Check website for track classes and descriptions.

GUPPY Sample AM Schedule (M-F)

Track	Class 1 8:45 – 9:45 am	Class 2 10:00 – 11:00 am	Class 3 11:15 am – 12:15 pm
A	Nuclear Astrophysics	Ancient Mathematics	Conservation Biology

GUPPY Sample PM Schedule (M-F)

Track	Class 1 1:30 – 2:30 pm	Class 2 2:45 – 3:45 pm	Class 3 4:00 – 5:00 pm
P	Theatre Arts	Cookie Decorating	Spanish

GUPPY Sample Weekend Schedule

Track	Class 1 8:45 – 10:25 am	Class 2 10:40 am – 12:20 pm	Lunch and Coordinated Activity Time	Class 3 1:50 – 3:30 pm
W	Tampering with triangles	Computer Coding		Watercolor Art



Intensive Studies for Gifted and Talented (IS4GT)

A one-week advanced program in a specific concentrated curriculum, IS4GT is an option for gifted students in Grades 6-11.

Important Dates for IS4GT Program

June 17-21, 2024 and July 15-19, 2024

Application deadline: May 10, 2024



Information meeting: April 7, 2024 | 1-2:30 pm

FOR MORE INFORMATION, VISIT:

gifted.msu.edu/is4gt

Tracks are comprised of one area of focus and will feature hands-on experience, lectures, and presentations from experts in that field of study. Students will have an opportunity get in-depth knowledge and exposure to a concentrated topic.

IS4GT is meant for students who have a profound interest in the topic offered, or for students who are considering a career in that area and want to learn more. IS4GT is a great opportunity for students to access resources at MSU, experience college life, and simultaneously learn with other gifted students.

Please see a sample course description below. Not all classes listed will be available; this is meant to be a sample of class variety and times. Check website for available classes and descriptions.

PRE-MED ED

Grades 7-10

This program is intended for students interested in the health care field. Students will:

- discover medical specialties through hands-on demonstrations and activities, such as intubation, physical therapy, respiratory therapy, and dissections;
- learn whole body anatomy, physiology, and integrated body systems to see how all the different systems in the body work together.
- explore the life of CPR and emergency-medical-response professionals;
- learn about pharmacology and how drugs interact with the body and living systems;
- learn about the different approaches of medicine: allopathic (MD) and osteopathic (DO); and
- explore subspecialties within the field of medicine.

ANTHROPOLOGY, ARCHAEOLOGY, AND CARTOGRAPHY: Hundreds of Years in the Making

Grades 7-10

Learning about past people through archaeology/anthropology. This course will investigate how archaeologists learn about past cultures. Students will learn about how archaeological sites are formed, how past people adapted to the environments they lived in, and then practice analyzing archaeological collection for themselves.

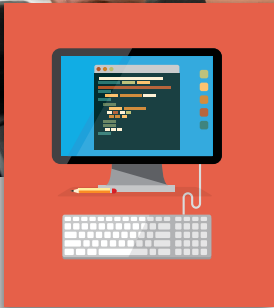
This program will also introduce students to the ideas of geography, weather patterns, and how these interact to form biomes. They will discuss the uses of maps to dictate these, and allow the students to come up with their own maps that they can take home with them.

GAME AI

Grades 7-10

Game developers use many tricks to give their characters decision-making abilities.

This course is for anyone wishing to know more about the mathematics behind common game behavior. The class will introduce a raft of important techniques used by game AI developers from decision theory, game theory and utility theory. We will also go into the theoretical background behind these techniques.



Math, Science, and Technology (MST@MSU)

MST@MSU is a one-week residential or commuter program for students in Grades 7-8. There are several advanced topic tracks from which students can choose. Each track has three classes featuring a combination of math, science, and technology instruction. MST is offered in a wide range of subjects, which have previously included computer science, astrophysics, kinesiology, engineering, and more. To be eligible for the residential option, students must be at least 12 years old by the start date.

Important Dates for MST Program

June 8-12, 2024 and July 15-19, 2024

Application deadline: May 10, 2024



Information meeting: April 7, 2024 | 1-2:30 pm

FOR MORE INFORMATION, VISIT:
gifted.msu.edu/mst

The program is held at the MSU campus and offers a variety of topics within mathematics, science, and technology, focusing on real-world applications in these areas. The goal is to match the intellectual abilities of talented students with rigorous and challenging coursework, which provides enrichment but does not duplicate or accelerate coursework that is part of the regular middle school curriculum.

MST participants choose a dedicated track that consists of three classes focused on a variety of STEM-based learning opportunities. The course curriculum features hands-on experiences, lectures, and presentations from experts in that field(s) of study.

For more comprehensive class details, go to gifted.msu.edu/programs/summer-programs/mst/class-options.

MST Sample Schedule

Please see sample schedule below. Not all classes listed will be available, this is meant to be a sample of class variety and times. Check website for track classes and descriptions.

Track	Class 1 9:00 – 11:00 am	Class 2 12:30 – 2:30 pm	Class 3 3:00 – 5:00 pm
1	Kinesiology	Nuclear Astrophysics	Computer Programming



Math, Science, Technology, and Leadership (MSTL)

MSTL is a one-week residential or commuter program for students in Grades 9-10. This program has previously included advanced topics such as molecular biology, advanced mathematics, and physics. Students will choose tracks that include two courses in either math, science, or technology as well as a leadership workshop. The leadership workshop is designed to navigate their college journey. To be eligible for the residential option, students must be at least 12 years old by the start date.

Important Dates for MSTL Program

July 15-19, 2024

Application deadline: May 10, 2024



Information meeting: April 7, 2024 | 1-2:30 pm

FOR MORE INFORMATION, VISIT:

gifted.msu.edu/mstl

The MSTL program offers advanced curriculum designed to stimulate students to learn about new developments in mathematics, science, and technology, and to explore related career fields. MSTL is a chance for early high school students to experience on-campus resources, be exposed to MSU instructors, and work toward a better understanding of opportunities for their future educational endeavors.

For more comprehensive class details, go to gifted.msu.edu/programs/summer-programs/mstl/mstl-classes.

MSTL Sample Schedule

Please see sample schedule below. Not all classes listed will be available, this is meant to be a sample of class variety and times. Check website for track classes and descriptions.

Track	Class 1 9:00 – 11:00 am	Class 2 12:30 – 2:30 pm	Class 3 3:00 – 5:00 pm
1	Molecular Biology	Physics	Leadership Course



Brain Bee at MSU

Saturday, March 9, 2024

A live Q and A competition that tests the neuroscience knowledge of Michigan high school students. Participants compete to determine who is the “best brain” on such topics as intelligence, memory, emotions, sensations, movement, stress, aging, sleep, addiction, Alzheimer’s, and stroke.

The event is **FREE** for all participants.

For more information and to register: brainbee.natsci.msu.edu

Sponsored by **GATE**



Neuroscience Program
MICHIGAN STATE UNIVERSITY



Pioneer



Innovate



Engage

MICHIGAN STATE
UNIVERSITY

Honors College

honorscollege.msu.edu

MICHIGAN STATE UNIVERSITY

SCIENCE FESTIVAL



APRIL 1-30, 2024

In-person events
on MSU's campus
and statewide

ALL EVENTS FREE



sciencefestival.msu.edu



MICHIGAN STATE UNIVERSITY

spartan youth programs

**Camps, Courses, Places to Visit,
Programs, and Other Activities
for Kids of All Ages**

(Pre-K through 12th Graders)

What is SYP?

An online catalog of **exciting opportunities for pre-K through 12th graders** to improve their knowledge and skills in specific subject areas. Pre-college programs are an excellent way for students to explore majors or careers while being introduced to the college environment.

With **over 200 listings** covering topics in agriculture, art, business, computers, engineering, math, music, science, sports, and writing, MSU is sure to have a **program for every student!**

You can search the SYP website for:

- summer and school year programs
- opportunities to earn college credit
- residential experiences on the MSU campus
- financial assistance
- study abroad possibilities

For more information, visit

spartanyouth.msu.edu

MICHIGAN STATE
U N I V E R S I T Y

Gifted and Talented Education
University Outreach and Engagement

P.O. Box 379
Okemos, MI 48805-0379

For more information on any of our programs, please visit
GIFTED.MSU.EDU